



MODULAR HOMES

admin@streamlinefitouts.com.au

Contents

6x3.5 MODULES	4
9x3.5 MODULES	6
12x3.5 MODULES	8
13.2x3.5 MODULES	10
13.2x3.5 MODULES	12
13.2x3.5 MODULES	14
14.0x5.2 MODULES	18
14.0x4.9 MODULES	20
Colour/List	22

Why Streamline Modular?

- . Spacious Layouts:** Customisable floorplans with premium bedrooms, kitchenette, living area, and bathrooms for comfortable living.
- . Fast, High-Quality Build:** Move in within four weeks with modular homes crafted to top Australian standards, ensuring durability and excellence.
- . Personalized Options:** Tailor your modular home with custom floorplans, appliances, and furniture, prioritizing quality and style.
- . Durable & Relocatable:** Built for longevity, our modular homes meet rigorous standards and can be easily transported to your desired location.

Our Modular Solutions

- . Sizes:** 21m² to 60m², customizable to fit any budget or lifestyle.
- . Portable Option:** Mobile setup with sewer, power, and water connections via hoses and leads. Place on timber sleepers or optional non-roadworthy trailer base for easy relocation. No concrete foundation needed—ideal for temporary living.
- . Fixed SSD Option:** Permanent Small Second Dwelling with standard plumbing and wiring, built like a traditional home. Perfect for long-term use.
- . Compliance:** Both options meet NCC standards with a 7-star energy rating.

6M x 3.5M STREAMLINE MODULE

STARTING FROM

\$ 46,200 + GST

(excludes transport, delivery, site works, appliances and furniture)

SM
STREAMLINE MODULAR

. 6 Metre (Length) x 3.5 Metre (Width)

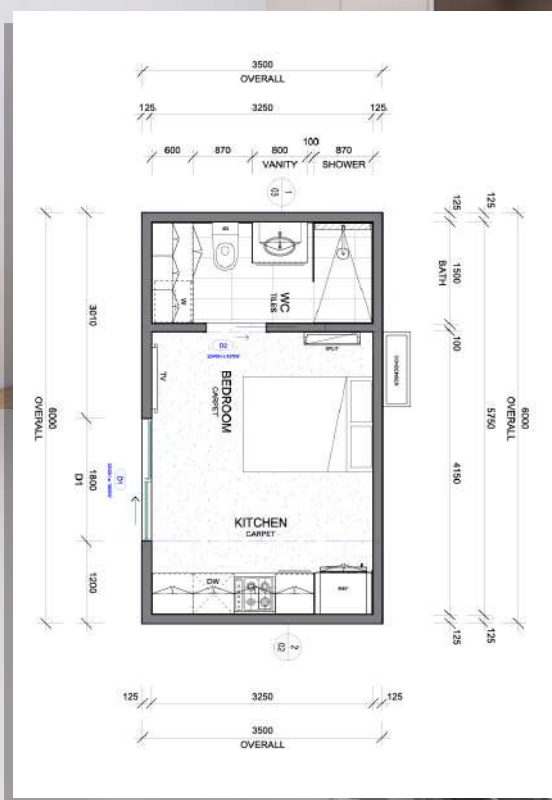
. 1 x Bedroom , 1 x Kitchen, 1 x Dining, 1 x Living Room & 1 x Ensuite Bathroom

. 4 to 10 weeks from order and floorplan design to handover including site works

Basalt

admin@streamlinefitouts.com.au





9M x 3.5M STREAMLINE MODULE

STARTING FROM

\$ 69,500 + GST

(excludes transport, delivery, site works, appliances and furniture)



- . 9 Metre (Length) x 3.5 Metre (Width)
- . 2 x Bedroom, 1 x Kitchen, 1 x Dining, 1 x Living Room & 1 x Bathroom
- . 4 to 10 weeks from order and floorplan design to handover including site works

Cove

admin@streamlinefitouts.com.au





12M x 3.5M STREAMLINE MODULE

STARTING FROM

\$ 90,000 + GST

(excludes transport, delivery, site works, appliances and furniture)



. 12 Metre (Length) x 3.5 Metre (Width)

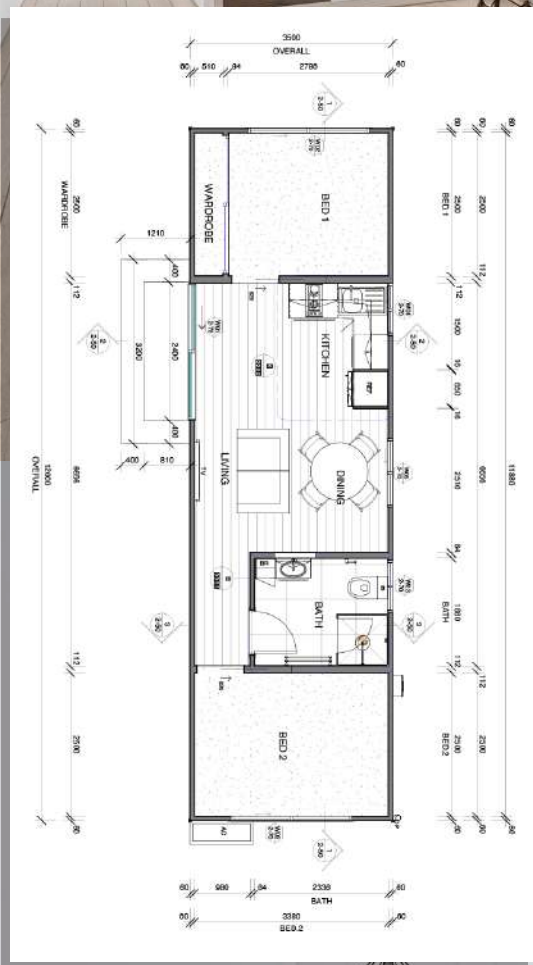
. 2 x Bedroom , 1 x Kitchen, 1 x Dining, 1 x Living Room & 1 x Spacious Bathroom

. 4 to 10 weeks from order and floorplan design to handover including installation works

Woodland Grey

admin@streamlinefitouts.com.au





13.2M x 3.5M STREAMLINE MODULE

STARTING FROM

\$ 99,900 + GST

(excludes transport, delivery, site works, appliances and furniture)



. 13.2 Metre (Length) x 3.5 Metre (Width)

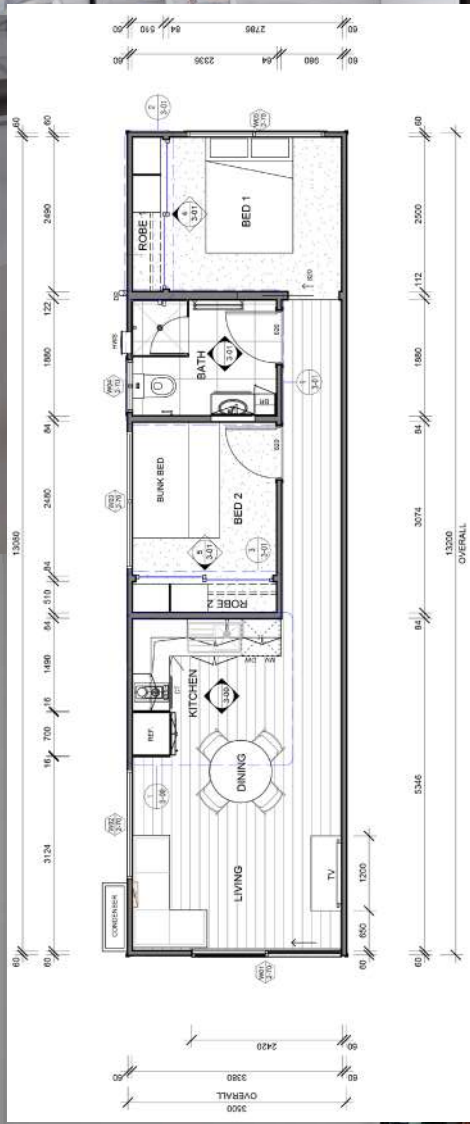
. 2 x Bedroom , 1 x Kitchen, 1 x Dining, 1 x Living Room & 1 x Spacious Bathroom

. 4 to 10 weeks from order and floorplan design to handover including site works

Shale Grey

admin@streamlinefitouts.com.au





13.2M x 3.5M STREAMLINE MODULE



STARTING FROM

\$ 99,900 + GST

(excludes transport, delivery, site works, appliances and furniture)

- . 13.2 Metre (Length) x 3.5 Metre (Width)
- . 2 x Bedroom, 1 x Kitchen, 1 x Dining, 1 x Living Room, 2 x Bathroom
- . 4 to 10 weeks from order and floorplan design to handover including site works

Shale Grey

admin@streamlinefitouts.com.au





2 2

13.2M x 3.5M STREAMLINE MODULE



STARTING FROM

\$ 99,900+GST

(excludes transport, delivery, site works, appliances and furniture)

. 13.2 Metre (Length) x 3.5 Metre (Width)

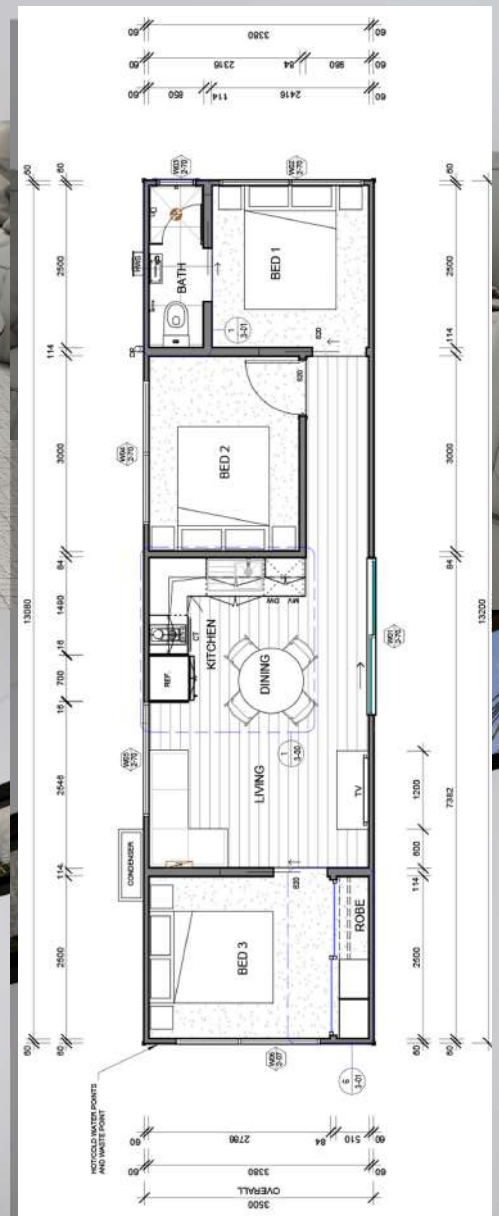
. 3 x Bedroom, 1 x Kitchen, 1 x Dining, 1 x Living Room & 1 x Bathroom

. 4 to 10 weeks from order and floorplan design to handover including site works

Shale Grey

admin@streamlinefitouts.com.au





14.4M x 3.5M STREAMLINE MODULE



STARTING FROM

\$ 110,000+GST

(excludes transport, delivery, site works, appliances and furniture)

. 14.4 Metre (Length) x 3.2 Metre (Width)

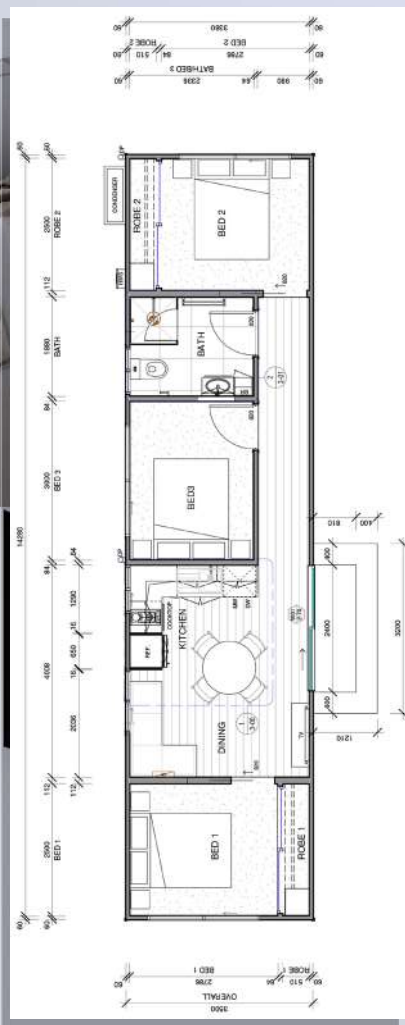
. 3 x Bedroom , 1 x Kitchen, 1 x Dining, 1 x Spacious Bathroom

. 4 to 10 weeks from order and floorplan design to handover including site works

Wallaby

admin@streamlinefitouts.com.au





3 

1 

14.0M x 5.2M STREAMLINE MODULE



STARTING FROM

\$ 199,900+GST

(excludes transport, delivery, site works, appliances and furniture)

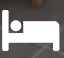

- . 14.0 Metre (Length) x 5.2 Metre (Width)
- . 3 x Bedroom , 1 x Kitchen, 1 x Dining, 1 x Living Room, 1 x Spacious Bathroom & 1x WC
- . 4 to 10 weeks from order and floorplan design to handover including site works

Windspray

admin@streamlinefitouts.com.au





3  1 

14.0M x 4.9M STREAMLINE MODULE



STARTING FROM

\$ 249,000+GST

(excludes transport, delivery, site works, appliances and furniture)

. 14.0 Metre (Length) x 4.9 Metre (Width)

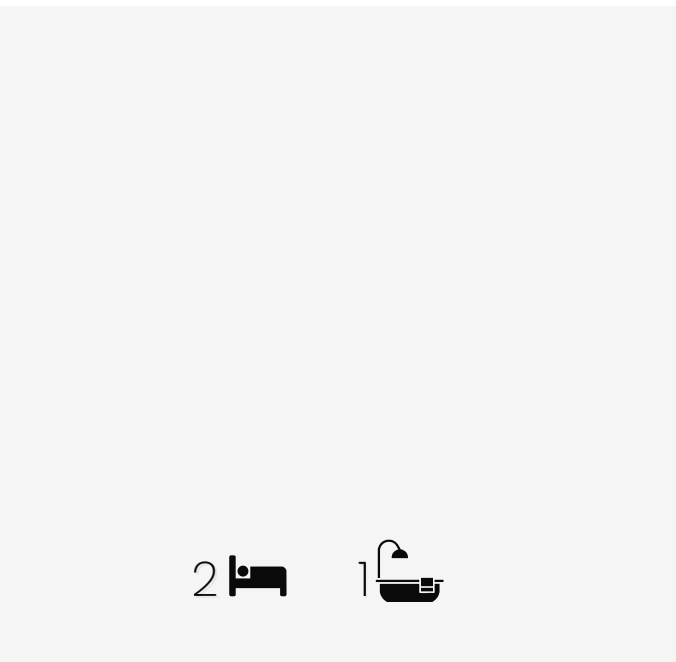
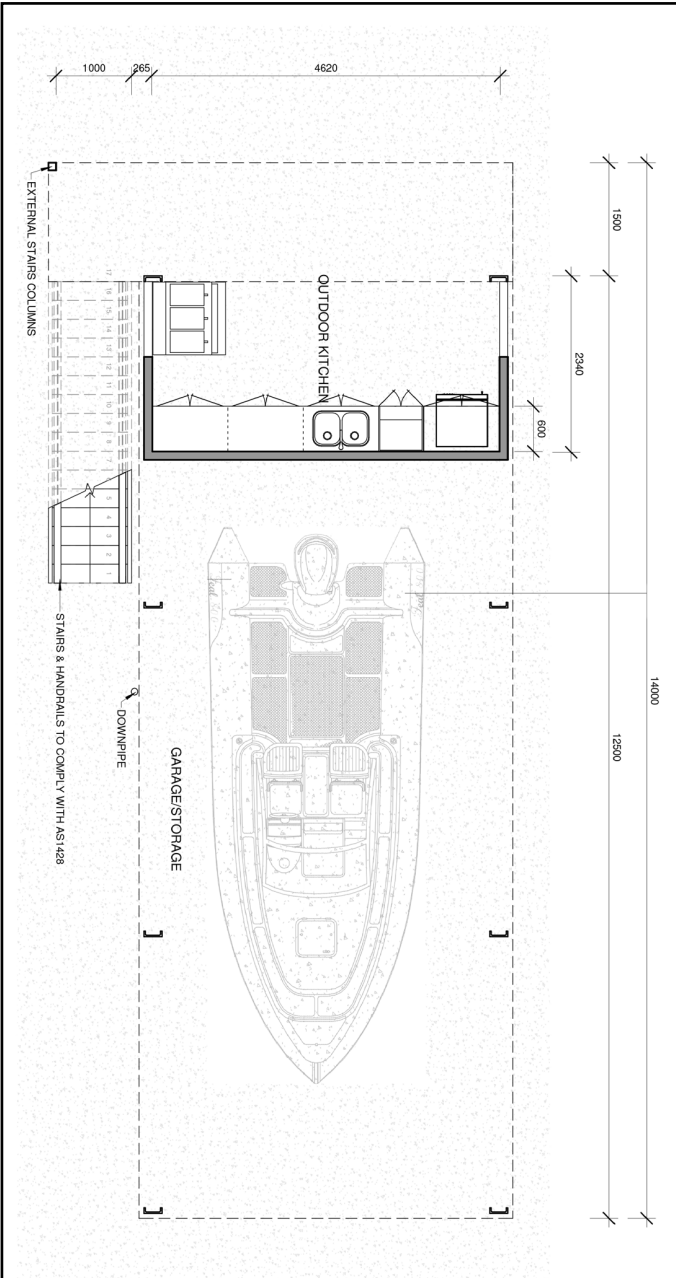
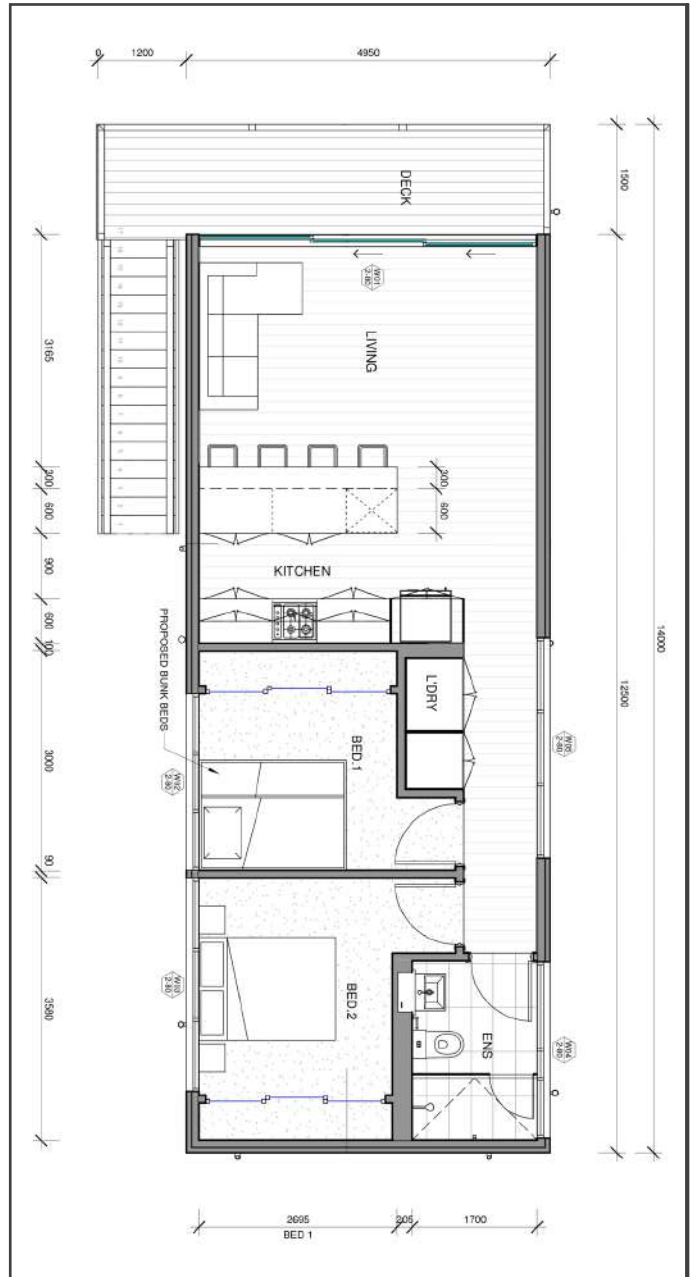
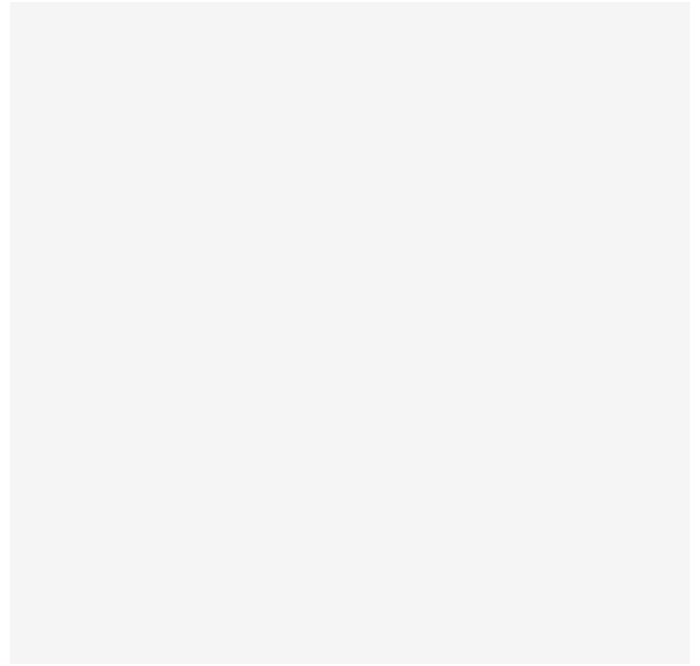
. 2 x Bedroom , 2 x Kitchen, 1 x Living Room & 1 x Ensuite Bathroom

. 4 to 10 weeks from order and floorplan design to handover including site works

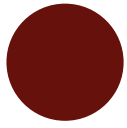
Jasper

admin@streamlinefitouts.com.au





External Cladding + Roof Colour Options



Manor Red



Jasper



Evening Haze



Monument



Classic Cream



Ironstone



Surfmist



Shale Grey



Cottage Green



Pale Eucalypt



Dune



Woodland Grey



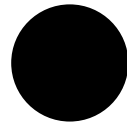
Windspray



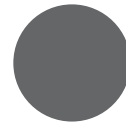
Deep Ocean



Paperbark



Night Sky



Basalt



Cove



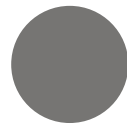
Gully



Mangrove



Terrain



Wallaby

List of fixtures & fittings

BATHROOM BASIN



TOILET



SHOWER BASE



BASIN MIXER



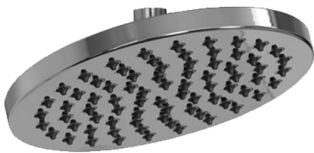
SHOWER MIXER



SHOWER ARM



SHOWER HEAD



TOWEL RING



SHOWER SCREEN



ROBE HOOK



TOILET ROLL



KITCHEN MIXER



KITCHEN SINK



BASIN MIXER



SHOWER MIXER



TOWEL RING



TOILET ROLL



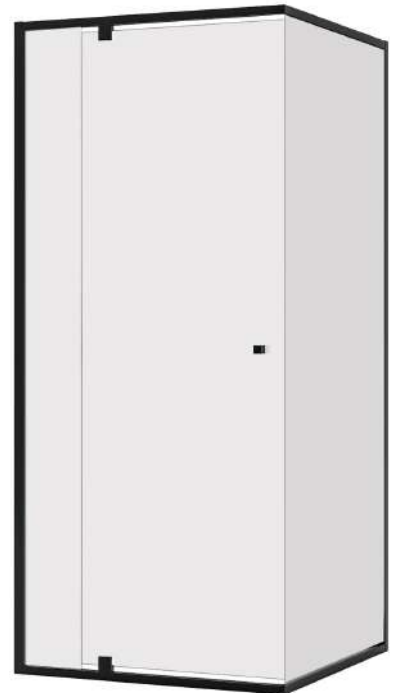
SHOWER ARM



TOWEL RAIL



SHOWER SCREEN



ROBE HOOK



RANGE HOOD



KITCHEN MIXER



SLIDING DOOR HANDLE



KITCHEN SINK





Contact us

Email: admin@streamlinefitouts.com.au

Location: 96 Logistics Street, Keilor Park, 3042

SM
STREAMLINE MODULAR



MODULES
admin@streamlinefitouts.com.au